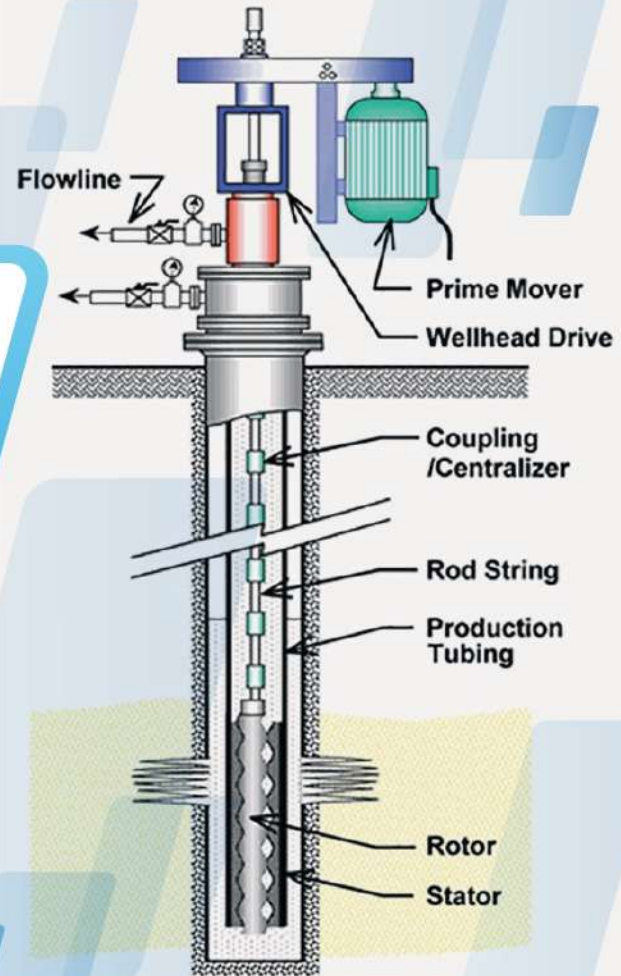




Engg Equipment & Systems



MESPL is a reliable, efficient and customer-oriented company that offers its customer a wide choice of solutions in rod guides and other completion products and accessories for artificial lift.

We are committed to excellence in customer satisfaction with our range of solutions and customer support.

**MEKANIK EQUIPO SISTEM PVT. LTD.**

**DURA-MEK** range of sucker rod guides are 100% manufactured in India and we only use Virgin polymer of reputed makes for best performance in your well.

We are open and flexible to work with our customers for development/ improvement of similar accessories.



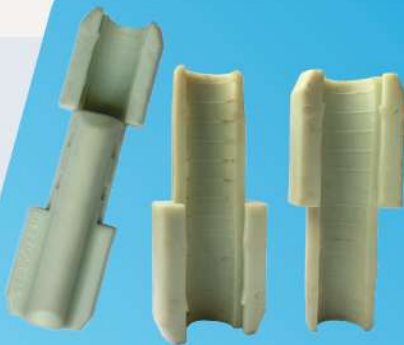
### **DURA-MEK-S**

Single slot, easy to install, economical and one of the most commonly used field installable design of rod guide. Easy to install, small size and good performance in most of the wells are key benefits of this design.



### **DURA-MEK-SN**

Snap on type, field installable, better rod grip with good performance to cost ratio and provide longer life. Larger contact area for rod grip and surface wear with taper at both ends for smooth flow of fluid around guide are key benefits of this design.



### **DURA-MEK-TS**

Two piece centralizer with straight vanes for increased flow passage and smooth flow of fluid. Field installable, increased flow area without reduction in wear performance and larger contact area for better grip on sucker rod are key benefits of this design.



### **DURA-MEK-TX**

Two piece centralizer with twisted vanes for increased flow passage and unrestricted flow of fluid. Field installable and improved helix design vanes for smooth and high flow of fluid and jointing of two pieces in helical joint for better and improved grip on rod are key benefits of this design.





### **DURA-MEK-NR**

Non rotating centralizers are one where polymer guide is allowed to rotate freely on the spindle. Spindle has threads on both side to be able to connect with sucker rod and also an optional shoulder for uni-directional installable design.

These are field installable and available with straight wide vane or twisted helical vanes.

This design deliver best performance as polymer sleeve theoretically remain in static position as it is fitted on spindle like a bearing on shaft. This results in lesser wear of sleeve and tubing.

Replacement polymer guide for non-rotating centralizer of other non-standard designs can be developed as per customer requirement.

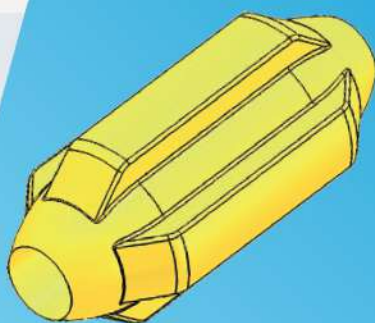
### **DURA-MEK-WG**

Wheeler guide for Sucker Rod pump to keep rods in centralize position and avoid tubing hit in reciprocating motion. Wheeler guide has 4 wheels along the length of guide, which are placed at around 45° to each other along the length to keep it more stable and in Center during up and down stroke of pump. Each wheeler guide has 4 polymer wheels, which are replaceable at site.

These wheeled guides are designed with field replaceable kit of wheels and bush system so that replacement of worn/ damaged wheels can be done onsite during work over jobs.



### **DURA-MEK-PSG**



Paraffin scrapping guide are being used for wells with high paraffin content as paraffin get deposited in tubing inner walls during course of pumping and reducing flow area, resulted in increased pump load. Paraffin scrapping guide helps in clearing fluid flow restrictions inside tubing due to paraffin and improve pump performance.

MESPL range of solutions for Oil & Gas comprises of:



Sucker Rod  
Guides &  
Non-rotating  
Centralizer



Sucker Rod,  
Sucker Rod  
Coupling,  
Pony Rod



Down-Hole  
Sand Screen



Flow Tee,  
Stuffing Box  
For Surface  
Drive Head



Mud Pump  
Spares

Complete  
artificial lift  
PCP system  
including PC  
pump, drive  
heads and  
other  
accessories.

Type	Guide Size (Rod Size x Tubing Size)	OD		ID		Length	
		inch	mm	inch	mm	inch	mm
DURA-MEK-S	7/8" x 2-7/8"	1.98	50.3	0.87	22	3.87	98.4
	1" x 2-7/8"	1.98	50.3	1	25.4	3.87	98.4
DURA-MEK-SN	7/8" x 2-7/8"	2.28	58	0.87	22.2	5.6	142
	1" x 2-7/8"	2.28	58	1	25.4	5.6	142
	1" x 3-1/2"	2.68	68	1	25.4	5.6	142
DURA-MEK-TS	7/8" x 2-7/8"	2.28	58	0.87	22	5.2	132
	1" x 2-7/8"	2.28	58	1	25.4	5.2	132
DURA-MEK-TX	7/8" x 2-7/8"	2.28	58	0.87	22	5.2	132
	1" x 2-7/8"	2.28	58	1	25.4	5.2	132
DURA-MEK-NR <sup>#</sup>	7/8" x 2-7/8"	2.28	58	1.69	43	4.72	120
	1" x 2-7/8"	2.28	58	1.69	43	4.72	120

Wheeled Rod Guide	Guide Size	No. of Wheels	Wheel OD		Length	
			inch	mm	inch	mm
DURA-MEK-WG	1" x 2-7/8"	4	2.28	58	26.93	684

Spindle MOC : AISI 4140

Sleeve MOC : PA 6, PA 66 with or without Glass Fill, Other Material on request basis.

**Note** : # - Given dimensions are for Rotating guide only. Spindle is supplied without coupling as a std.  
 Sizes not mentioned above can be supplied against requirement as applicable.  
 Designs other than shown in our brochure can be developed as per customer requirement.